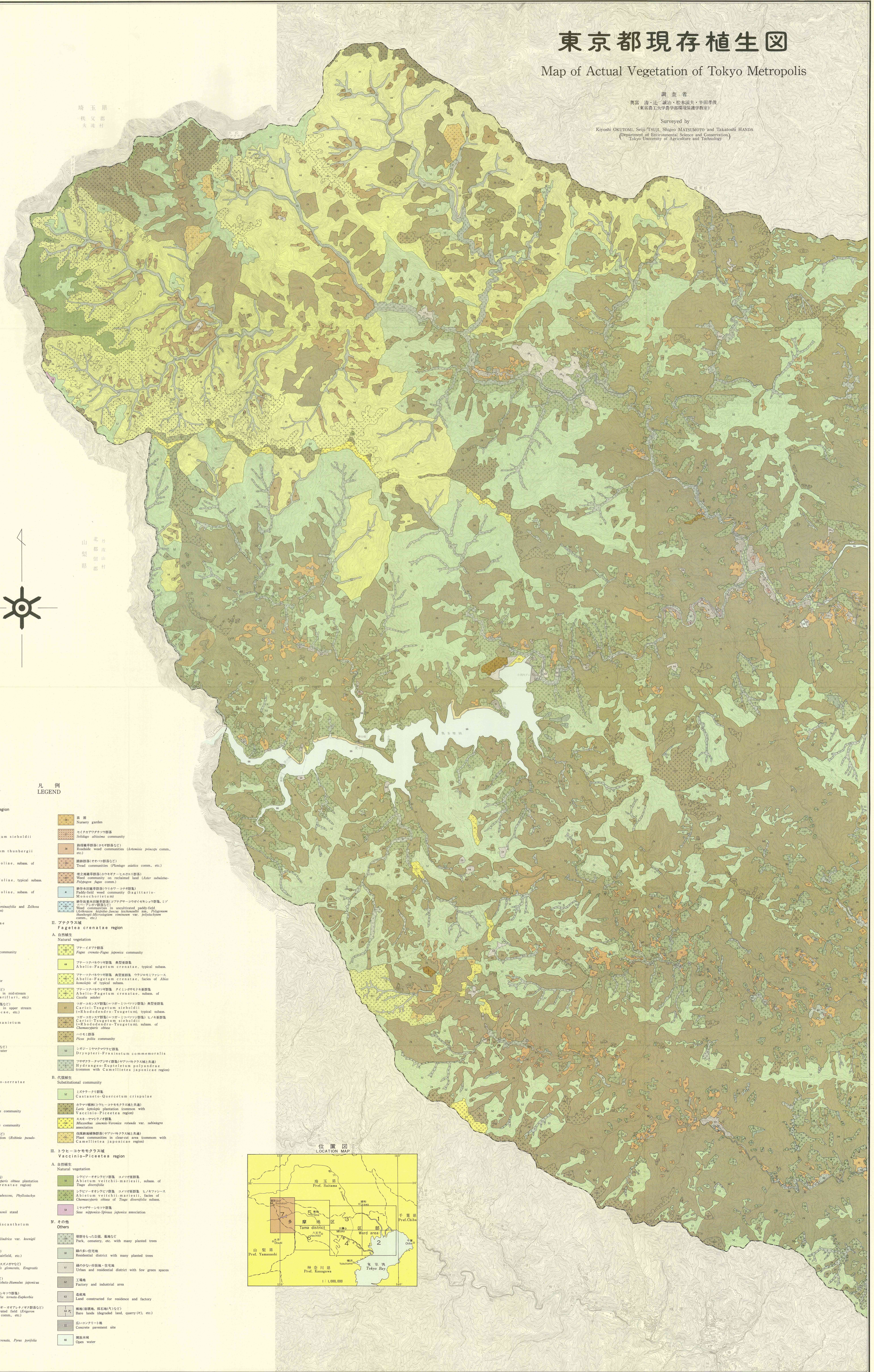


## Map of Actual Vegetation of Tokyo Metropolis

奥富 浩・辻 誠治・松本滋夫・半田孝俊  
(東京農工大学農学部環境保護学教室)

Surveyed by  
Kiyoshi OKUTOMI, Seiji TSUJI, Shigeo MATSUMOTO and Takatoshi HANDA  
(Department of Environmental Science and Conservation,  
Tokyo University of Agriculture and Technology)



昭和49年3月発行 東京都公害局  
Published by the Bureau of Environmental Protection,  
Tokyo Metropolitan Government in March, 1974.

昭和47年4月～昭和48年9月調査, 昭和48年10月～昭和48年12月部分修正  
Surveyed in Apr., 1972-Sept., 1973 and revised partially in Oct.-Dec., 1973.

Printed by : Kokudo Mapping Co. Ltd.

