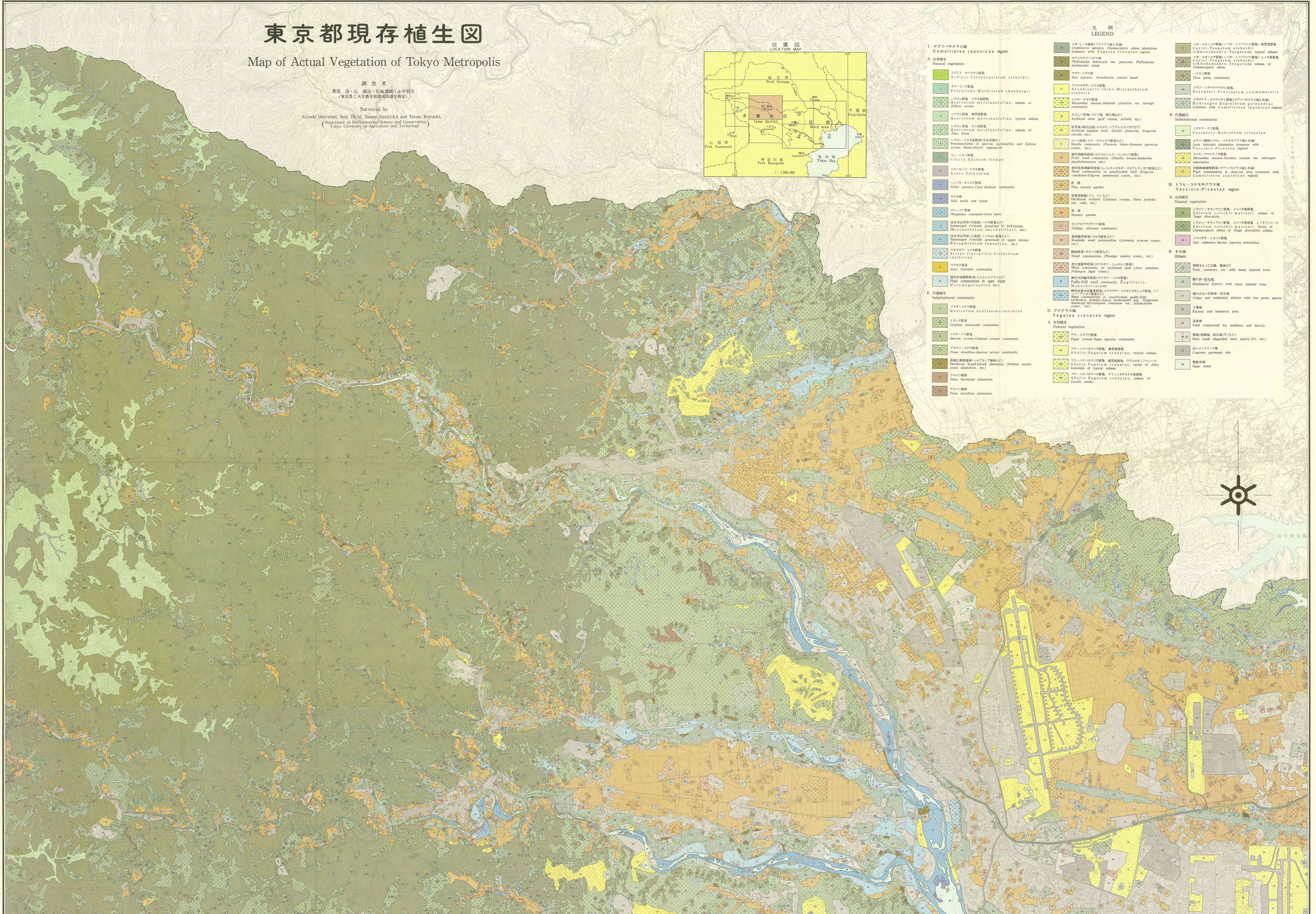
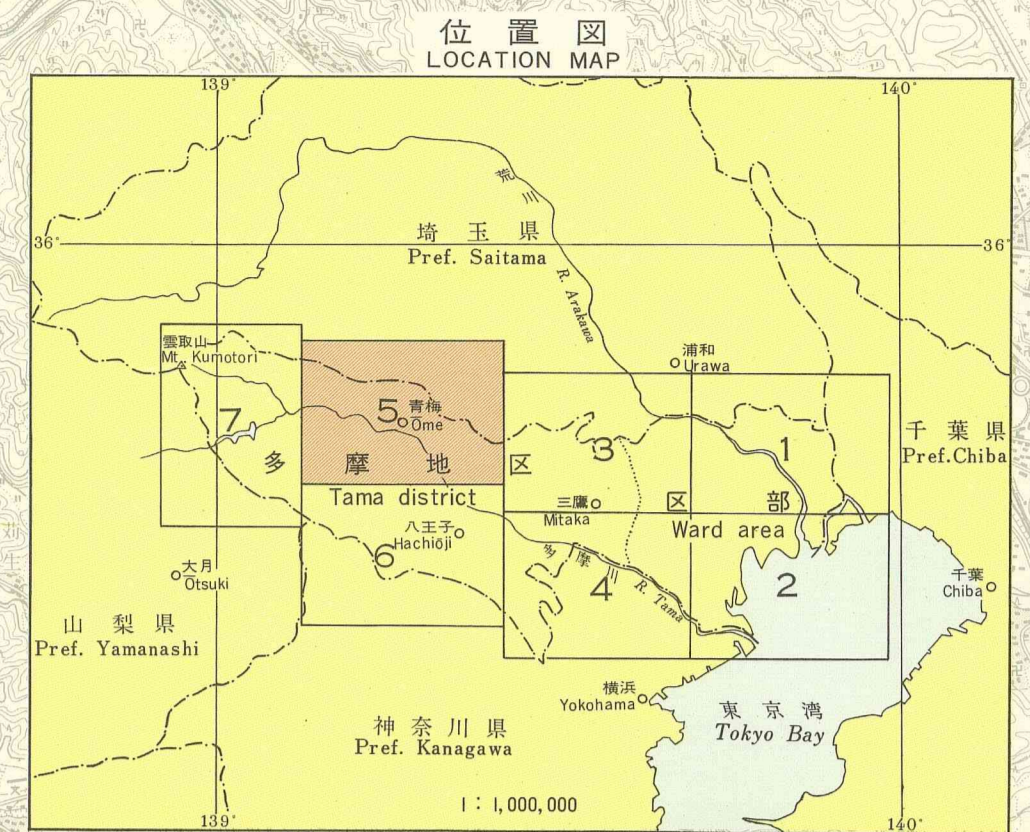


東京都現存植生図

Map of Actual Vegetation of Tokyo Metropolis

調査者
奥宮 清・辻 謙治・石塚 達雄・小平 作夫
(東京農工大学農学部環境保護学教室)

Surveyed by
Kiyoshi OKUTOMI, Seiji TSUJI, Tatsuo ISHIZUKA and Tetsuo KODAIRA
(Department of Environmental Science and Conservation,
Tokyo University of Agriculture and Technology)



凡例

- I. ヤブツバキクラス地域
Camellietea japonicae region**
- A. 自然植生**
Natural vegetation
- スズジギヤクワシ群落
Ardisia-Castanopsis sibirica
 - アザミノアザミ群落
Polypodium-Machiletum thunbergii
 - シラカバ群落
Quercetum myrsinaefoliae, subass. of *Zellera serotina*
 - シラカバ群落 典型植生
Quercetum myrsinaefoliae, typical subass.
 - シラカバ群落 モミ群落
Quercetum myrsinaefoliae, subass. of *Abies firma*
 - シラカバ群落 雑草群落(半自然植生)
Premontane of *Quercus myrsinaefoliae* and *Zellera serotina* (Semi-natural vegetation)
 - ミズシロ群落
Illicio-Abietum firmae
 - イロモミシラカバ群落
Asara-Zelleraetum
 - ハコバネ群落
Alnus japonica-Carex dichotoma community
 - ササ群落
Phragmites communis-Carex moor
 - コメ群落
Phragmites communis-Carex moor
 - 延床河原(中流) (半自然植生)
Submerged riverbed (middle stream) (*Miscanthum sacchariflori*, etc.)
 - 延床河原(上流) (半自然植生)
Submerged riverbed (upper stream) (*Panicum japonicum*, etc.)
 - カササギ群落
Scirpus (L.) var. latifolius-Zizanietum latifolium
 - イネ群落
Alnus japonica community
 - 開田雑草群落(ヒルシロコメなど)
Plant community in open field (*Panicum japonicum*, etc.)
- B. 代植植生**
Substitutional community
- クサギ群落
Quercetum acutissimum-serratae
 - イシナガ群落
Corylus ichikawae community
 - コナラ群落
Quercus serrata-Castanea crenata community
 - アケボノ群落
Pinus densata-Carex serotina community
 - 常緑広葉樹林(コナラアザミ群落)
Deciduous broad-leaved plantation (*Rubus pseudo-platanifolius*, etc.)
 - クサギ群落
Plant: *Shoshigaki* plantation
 - アケボノ群落
Plant: *densiflora* plantation
- II. アナツバキクラス地域
Fagetea crenatae region**
- A. 自然植生**
Natural vegetation
- アケボノ群落
Fagus crenata-Fagus japonica community
 - アケボノ群落
Abelio-Fagetum crenatae, typical subass.
 - アケボノ群落
Abelio-Fagetum crenatae, face of *Abies firma* of typical subass.
 - アケボノ群落
Abelio-Fagetum crenatae, subass. of *Castanopsis*
- B. 代植植生**
Substitutional community
- アケボノ群落
Castanetum-Quercetum crispulae
 - アケボノ群落
Larix principis-rupprechtii community with *Vaccinio-Piceetea* region
 - アケボノ群落
Miscanthus sinensis-Fragaria vesicaria var. *subintegra* association
 - アケボノ群落
Association: *Quercus japonica* (common with *Camellietea japonicae* region)
- III. トウヒコケモモクラス地域
Vaccinio-Piceetea region**
- A. 自然植生**
Natural vegetation
- シラビソ群落
Abietum velitchii-mariesii, subass. of *Pinus densata*
 - シラビソ群落
Abietum velitchii-mariesii, subass. of *Pinus densata*
 - シラビソ群落
Abietum velitchii-mariesii, subass. of *Pinus densata*
- B. 代植植生**
Substitutional community
- シラビソ群落
Abietum velitchii-mariesii, subass. of *Pinus densata*
 - シラビソ群落
Abietum velitchii-mariesii, subass. of *Pinus densata*
 - シラビソ群落
Abietum velitchii-mariesii, subass. of *Pinus densata*
- IV. その他**
Others
- 樹林(雑草)など
Park, cemetery, etc. with many planted trees
 - 住宅地
Residential district with many planted trees
 - 住宅地
Urban and residential district with few green spaces
 - 工場
Factory and industrial area
 - 造成地
Land constructed for residence and factory
 - 裸地(掘削地、採石場など)
Bare lands (excavated land, quarry, etc.)
 - コンクリート舗装
Concrete pavement site
 - 開水